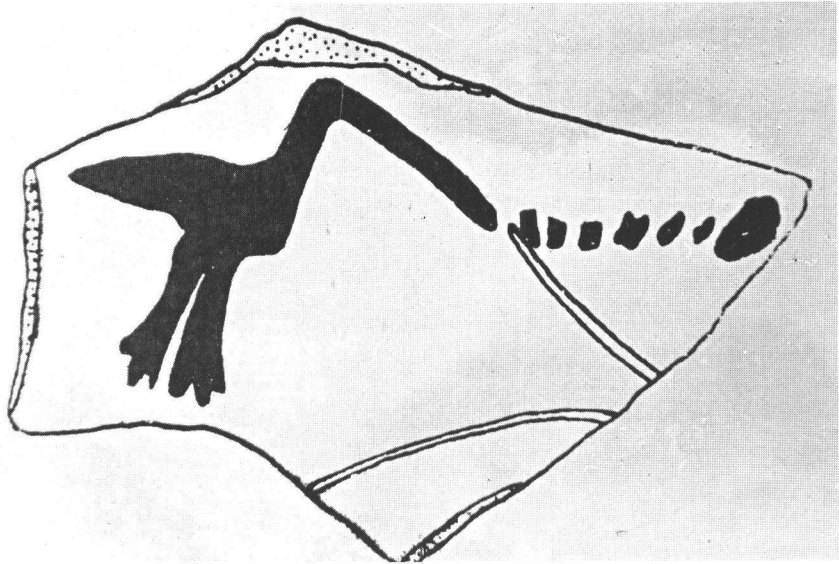




Disturbed Dolmens at Konnur (near Gokak falls)



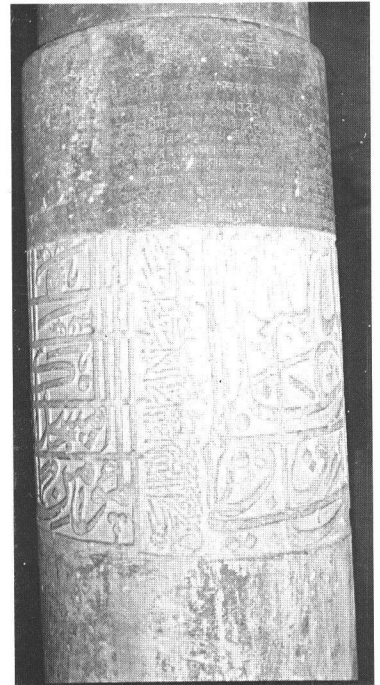
Terracota Pre-historic remains, Vadgoan Madhavapur Excavation



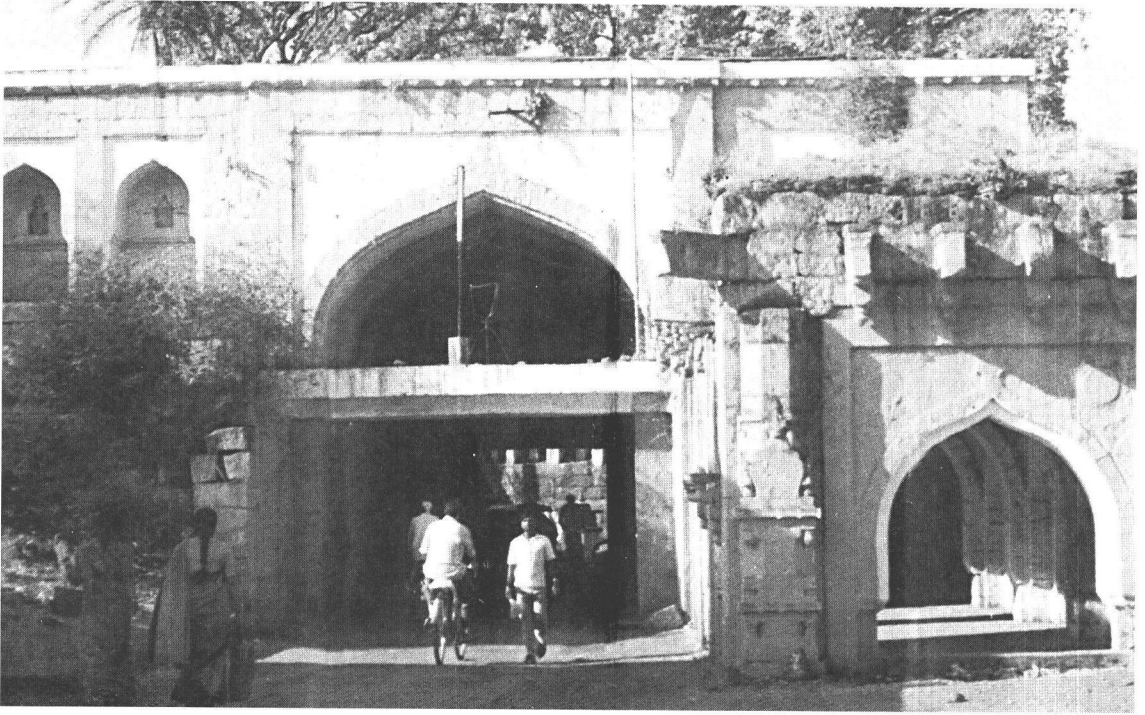
Pre historic painting - of a spoon bill on a pottery from Satti



Persian inscriptions in the Fort, Belgaum



Safa Mosque pillar inscription in both Nagari and Persian, Belgaum



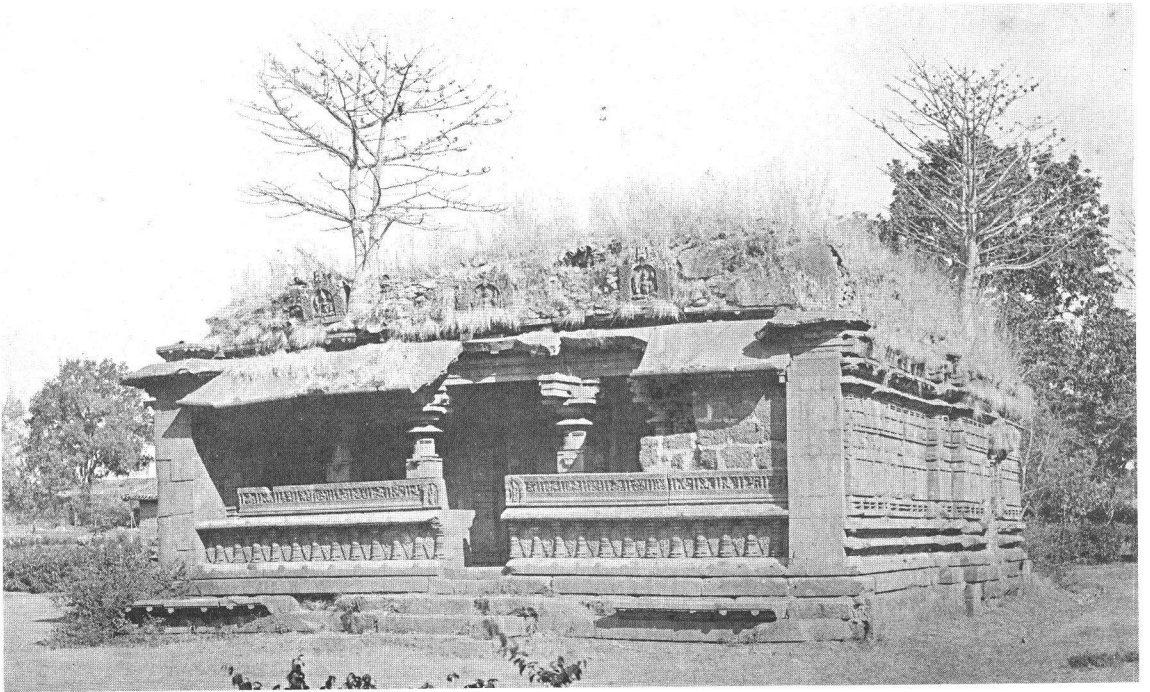
Inside view of Belgaum Fort



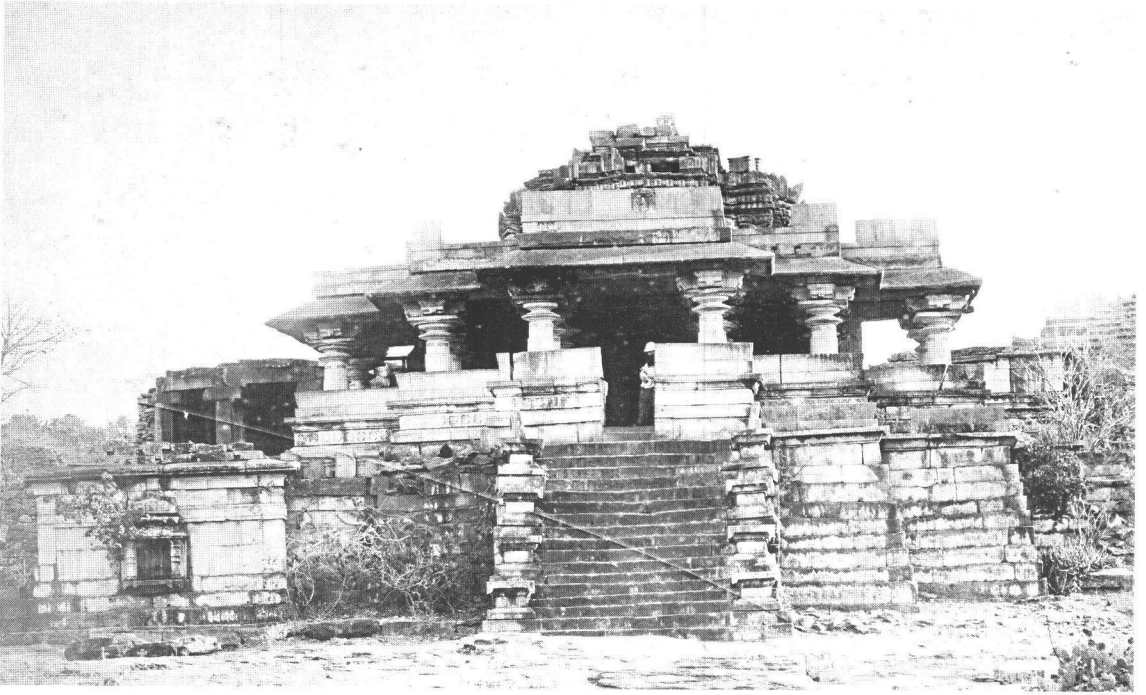
Ruined Fort at Kittur



Kamal Basadi inside the Fort, Belgaum



Another dilapidated Jain temple inside the Fort, Belgaum



Mahalingeswara temple, Gokak falls



Chikaleshwara temple, Konnur



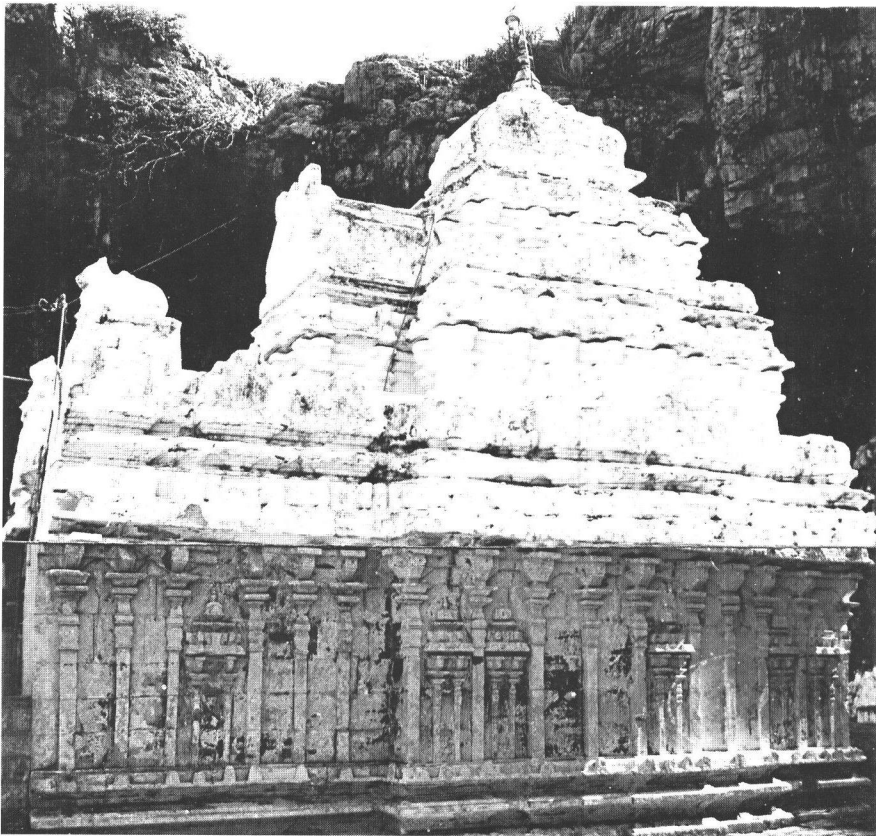
Mallikarjuna temple, Murgod



Bhramarambha and Someshwara temple, Sogal



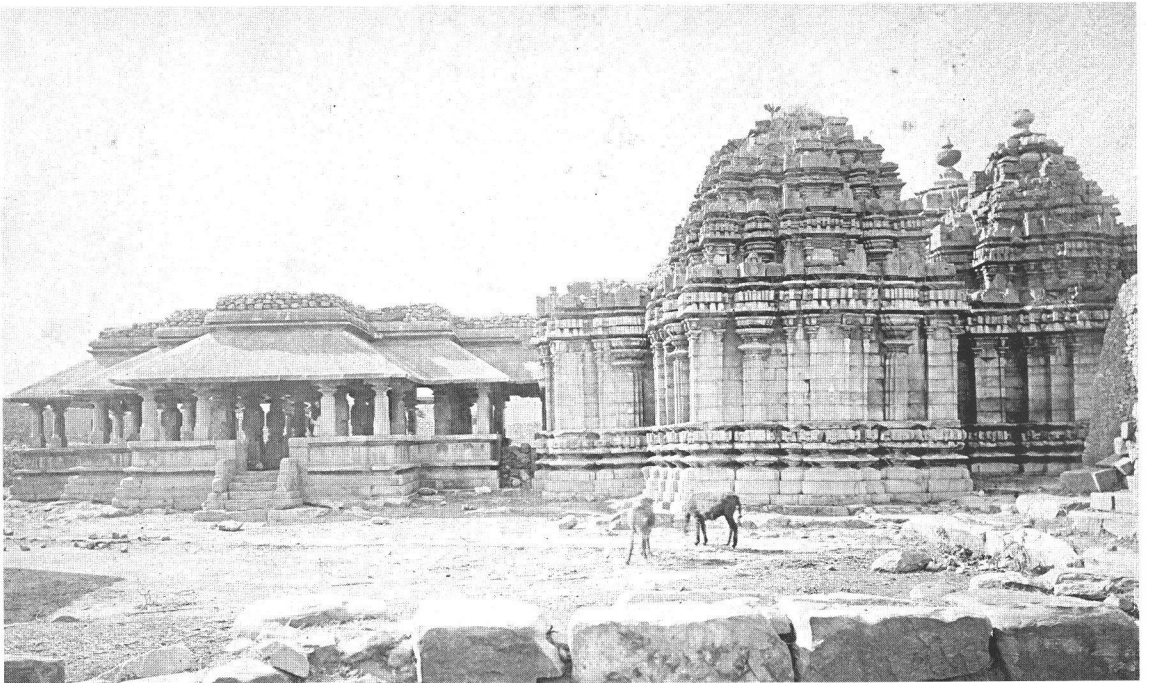
Kalmeshwara temple, Avaradi near Kittur



Siddeswara temple, Siddanakolla, Kallur



A rear view of Kamalanarayana temple complex, Degaon



Panchalingeswara temple complex, Hooly



Kalika image, Raibag



Kalika image, Sirsangi



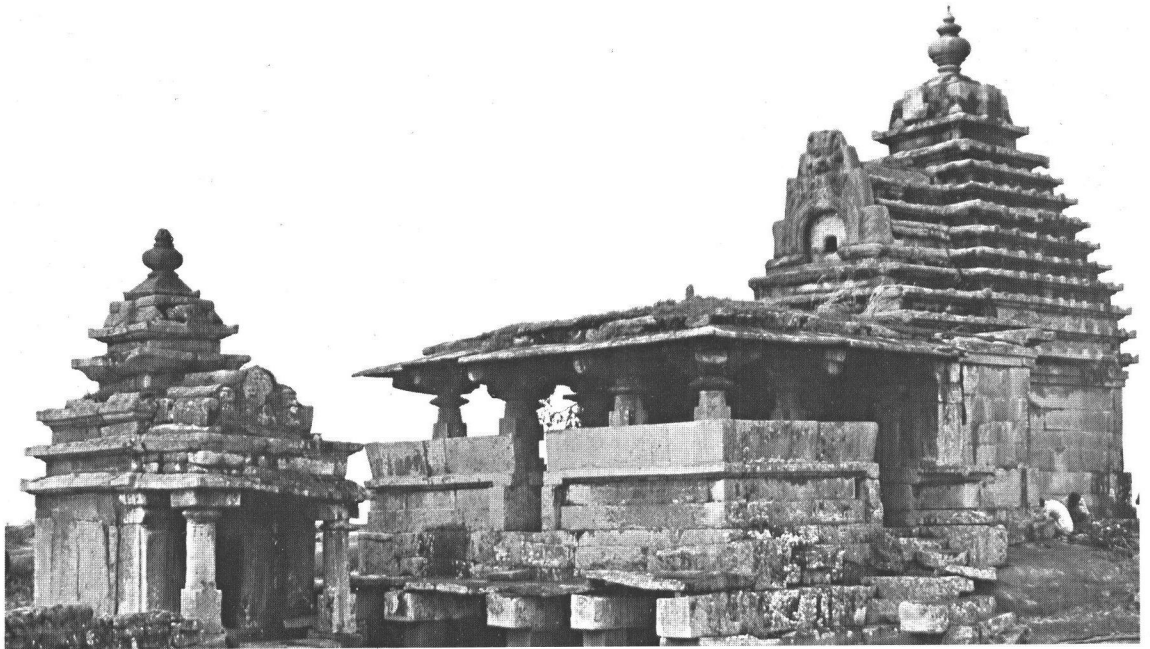
Kalika temple, Sirsangi



Dohara Kakkayya's Image at Kakkeri



Yellamma temple, Saundatti



Rameshwara and Surya temples at Ramatirtha near Halasi



Shikhareshwara temple in ruins with a Rekhanagara Shikhara, Hattargi



A temple amidst Buthanatha temple complex, Torgal



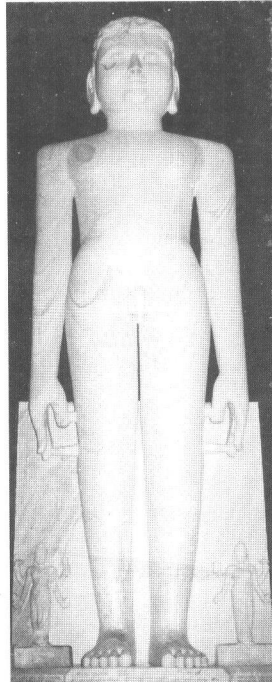
**Vishnu and Lakshmi from Bhuvараह
Narasimha temple, Halasi**



**Lakshminarayana at Kamalanarayana
temple, Degaon**



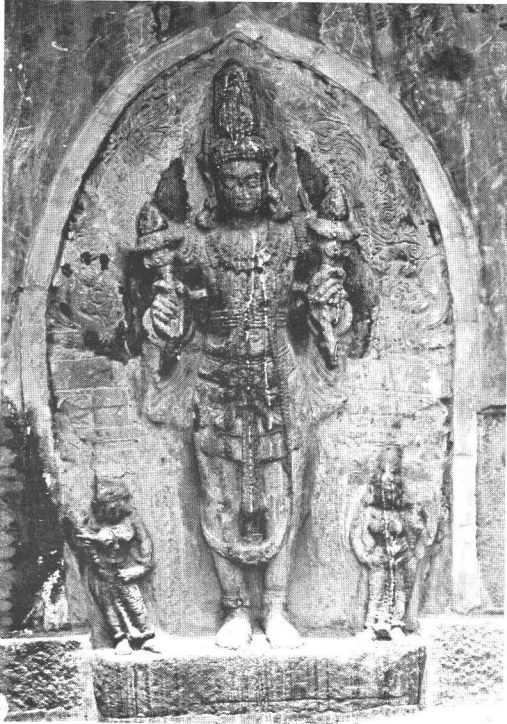
**A Jain Tirthankara from
Bellada Bagewadi Basadi**



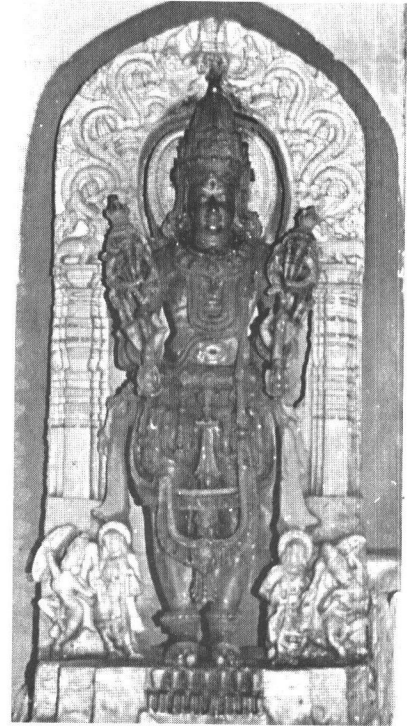
**Bahubali, Shantagiri,
Kothali**



Image on abacus, Tavadi



Surya, Maradinagalapura



Surya, Bhuvareha Narasimha temple, Halasi



Veerabhadra at Doddawad temple



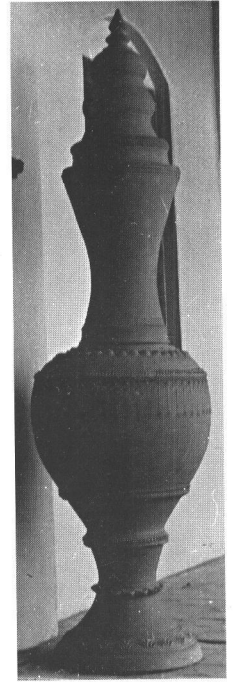
Bhramaramba image, sogal



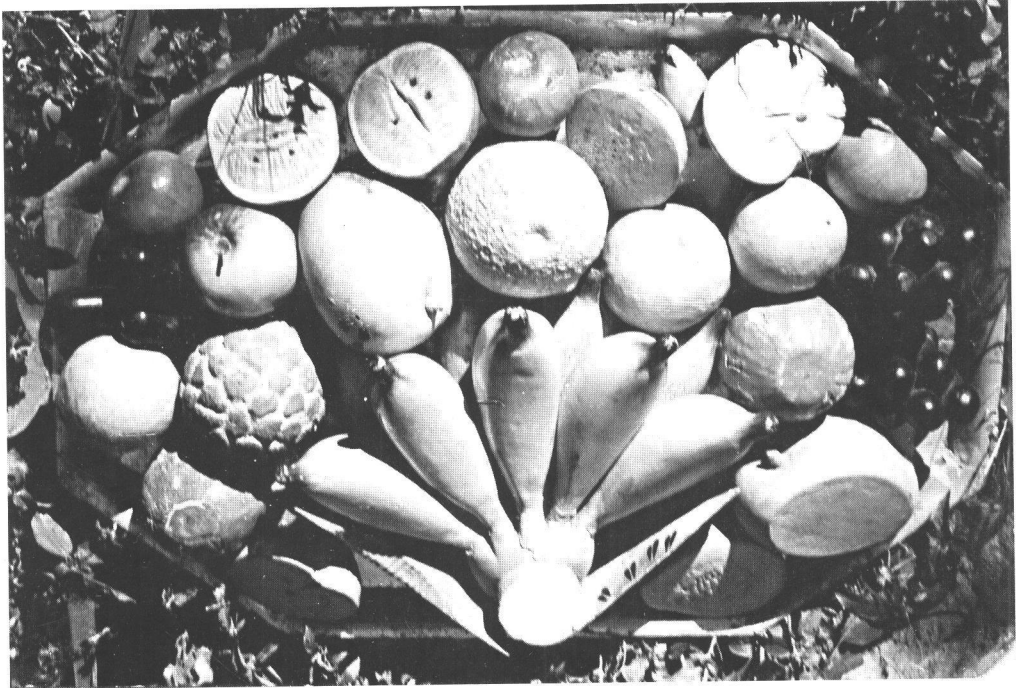
**Painting on a
palanquin, Yadwad**



Mural painting in Nippanikarwada, Nippani



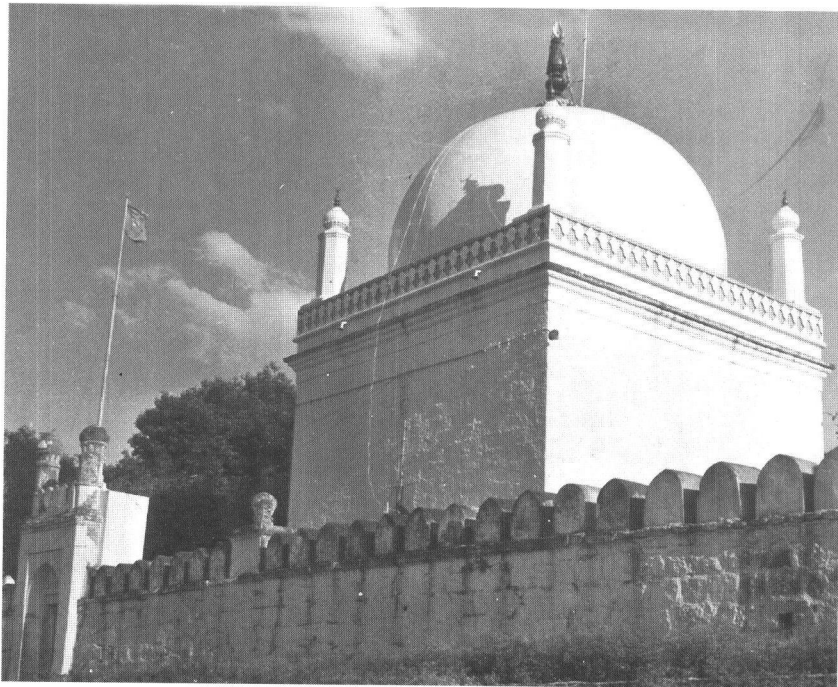
**Pottery from
Pottery Institute,
Khanapur**



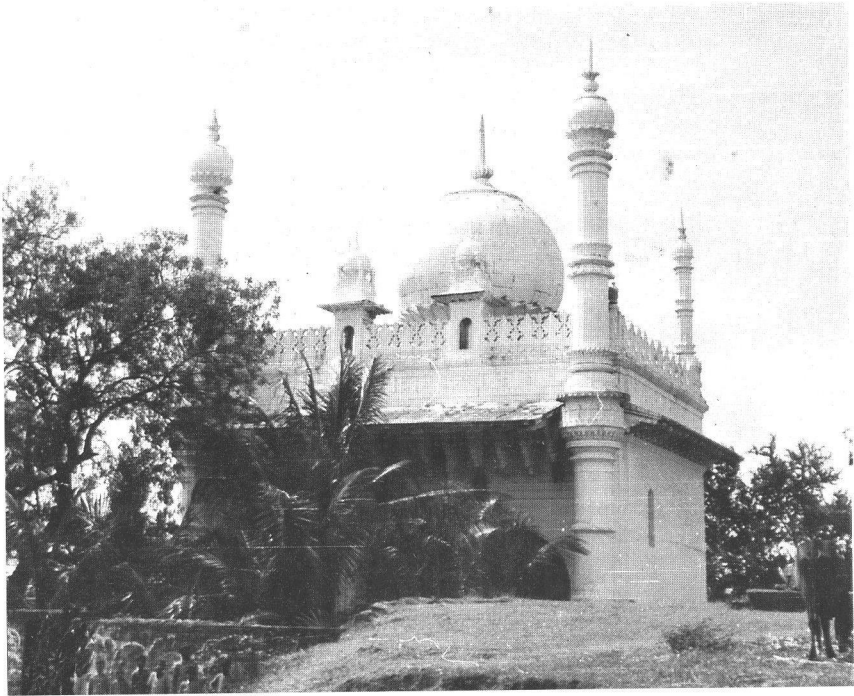
Artificial fruits, Gokak toy tray



Adilshahi Building in ruins at Tigadi



Peer Masaheba Dargah, Kudachi



Jamia mosque, Sampgaon

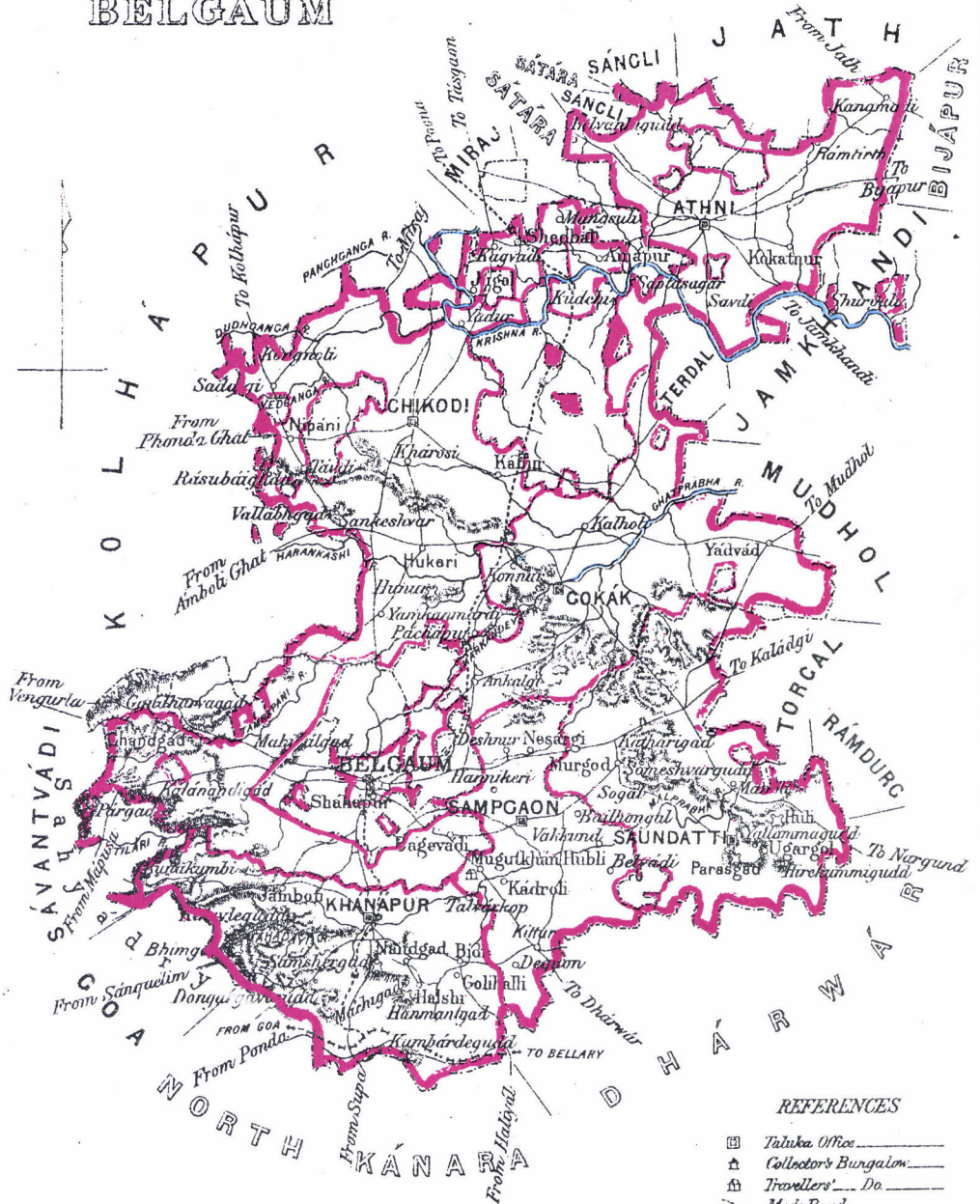


St. Anthony Church, Kakkeri



Catholic Church, Khanapur

BELGAUM



Scale 20 Miles = 1 inch

